

CASTINO

RESTAURANT EQUIPMENT & SUPPLY

Northern California
Main Office, Showroom
& Distribution Center

50 Utility Court
Rohnert Park, CA 94928

Tel: (707) 585-3566
Toll-free: (800) 238-0404
Fax: (707) 585-7306

Monday - Saturday, 8:00am - 5:00pm

Web: www.castinosolutions.com
Email: sales@castinosolutions.com

Sale good through August 31, 2011



Mixers

- All mixers feature separate start and emergency stop buttons so operators can shut down the mixer immediately
- Standard equipment includes high quality stainless steel bowl, dough hook, flat beater and whip

Item No.	Capacity	Price
3739	5 qt.	\$587.00
18300	20 qt.	\$2,246.00



Price Computing Scale

- Automatic or digital entry tare
- Automatic shut-off
- Weighs from .01 lb. to 30 lbs.
- Stainless steel recessed platter
- Legal for trade, NTEP approved
- 12.2"W x 13.2"D x 4.7"H
- Six-foot, 115-volt power cord and molded plug
- Adds multiple transactions up to \$9,999.99
- One-year parts and labor



4039

Item No.	Description	Price
4039	Price computing scale	\$265.00
4040	Price computing scale with tower	\$292.00

Heavy Duty Commercial Microwave

- 1000 watts output power
- Stainless steel interior and exterior design
- Up to 10 programmable memory settings
- 3 power levels to choose from
- Interior space .9 cu. Ft
- Large transparent glass door
- .9 cu. ft. capacity
- 110 Volts, 1.5 kW
- 21"W x 18"D x 13"H

3956 \$419.95



Stainless Steel Units

- Durable stainless steel door
- Stainless steel interior and exterior
- Fully balanced self contained refrigeration system
- Heavy duty casters with two front brakes
- Refrigerators: Temperature range 32°F to 40°F
- Freezers: Below 0°F
- cULus, ETL Sanitation Listed, NSF Listed



Sandwich Prep Tables

Item No.	Description	HP	Amps	W x D x H	Price
4950	1-Door prep table	1/5	3.2	27-1/2" x 30" x 36-1/2"	\$1,470.00
4952	2-Door prep table	3/8	7.9	48-1/4" x 30" x 36-1/2"	\$2,264.00
4951	1-Door mega top	1/5	3.2	27-1/2" x 33" x 38-1/4"	\$1,757.00
4953	2-Door mega top	3/8	7.9	48-1/4" x 33" x 38-1/4"	\$2,562.00

Undercounters

Item No.	Description	HP	Amps	W x D x H	Price
4958	1-Door refrigerator	1/5	3.2	27-1/2" x 30" x 36"	\$1,277.00
4959	2-Door refrigerator	1/5	7.9	48-1/2" x 30" x 36"	\$1,919.00
4962	1-Door freezer	3/8	7.9	27-1/2" x 30" x 36"	\$1,538.00



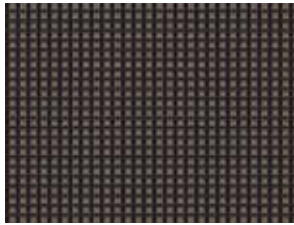
Avenger™ High Temp Dishwasher

- Exclusive Sani-sure™ technology ensures proper sanitation is achieved every cycle
- 2-minute automatic cycle, including auto-fill
- Cleans 24 racks per hour
- Unique dump and fill design assures washing with clean water every cycle
- Built-in chemical pumps, PRV and low product alarm system are standard
- Above water scrap tray
- Pumped drain
- Labyrinth type door design with door safety switch
- Includes two dishracks (one peg, one combination)
- Durable 304 stainless steel construction

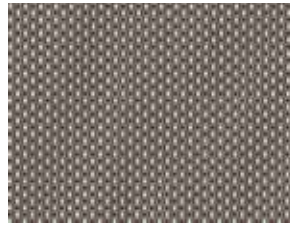
13987 \$4,082.00

Northern California
(800) 238-0404

Hours
Monday - Saturday, 8:00am - 5:00pm



4065



4069

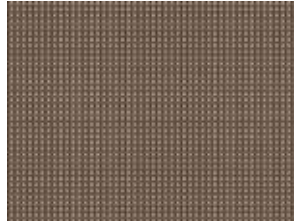


4067

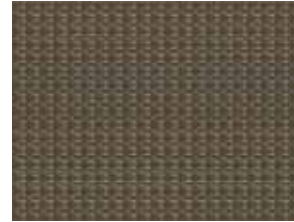
Woven Placemats

- 16" x 12"
- Woven vinyl

Item No.	Color	Price
4065	Black	\$7.99
4066	Taupe	\$7.99
4067	Bronze	\$7.99
4068	Pewter	\$7.99
4069	Aqua/Brown	\$7.99



4068



4066

Manual Can Openers

- The #1 and #2 are Edlund's Original Commercial Can Openers
- Improved with a rust-resistant arbor and a plastic bushing for lower turning force and easier opening
- Base with plastic insert allows for a better fit and smoother slide action
- Recommended usage:
#1 - 50 cans per day;
#2 - 15 cans per day
- Made in USA



Item No.	Description	Price
1119	"Old Reliable" for cans up to 11" tall, 1-Year Warranty	\$119.95



Stainless Steel NSF Manual Can Opener

- Sanitary cast stainless steel
- Opens most can shapes/sizes up to 14"
- Dishwasher safe
- Pull pin for easy blade replacement without tools
- Recommended usage: 50 cans per day
- 5-year warranty
- NSF Certified
- Made in USA

2579 \$439.95



NSF Quick Change Can Opener

- NSF clean ability, modern design at an affordable price
- Stainless steel blade and gear for longer life
- Easily disassembled for easy cleaning
- Replaceable base insert for a tighter fit and easier slide action
- Available in long and short bar lengths
- Recommended usage: 50 cans per day
- Made in USA

3283 \$199.95



Xtreme Hi-power Blenders

- Blender that is great for soups, salsas, sauces, desserts, dressings and beverages
- One-piece dishwasher safe removable jar pad
- 3.5 HP, 45,000 RPM
- 120V, 50/60 Hz
- Limited three-year motor and two-year parts and labor warranty
- cETLus and NSF Listed

Item No.	Description	Price
5840	64 oz. Polycarbonate container, simple hi/low/off and pulse paddle switches	\$389.95
5841	64 oz. Polycarbonate container, electronic membrane keypad with simple hi/low and pulse functions and 30 second countdown timer	\$459.95

Email
sales@castinosolutions.com

Web
www.castinosolutions.com



EVERY WARE EVERY DAY

Slimline Beverage Dispensers

- Available with standard, fast flow Tomlinson® faucet
- Twin features two 3 gallon reservoirs
- Hingeless cover design
- Graduations on side of reservoir
- FDA Approved polypropylene
- NSF Listed



Item No.	Description	Price
10284	Single, 3 gallon Brown	\$38.79
10283	Single, 3 gallon Almond	\$38.79
3939	Single, 5 gallon Brown	\$63.59
11468	Twin, 3 gallon Almond	\$79.95



Plastic Beverage Dispensers

- Tomlinson® faucets
- Half gallon graduations on side of reservoir
- FDA Approved polypropylene
- NSF Listed



Item No.	Description	Price
7937	3 Gallon Black	\$33.95
7936	3 Gallon Brown	\$33.95

Labels not affixed on all dispensers.



HBB908 Bar Blender

- Blends a 16 oz. daiquiri in just 25 seconds
- Two speed, 3/8 HP motor offers versatility and precision blending for a wide variety of food and drink mixtures
- Durable stainless steel blades are made to last
- Unit comes with base, 44 oz. polycarbonate container, Sure Grip™ feet, and blade assembly unit
- 120V, 60 Hz
- One-year parts and labor warranty

1923 \$79.95



HBB909 Bar Blender

- Blends a 16 oz. daiquiri in just 25 seconds
- Two speed, 3/8 HP motor offers versatility and precision blending for a wide variety of food and drink mixtures
- Durable stainless steel blades are made to last
- Unit comes with base, 44 oz. stainless steel container, Sure Grip™ feet, and blade assembly unit
- 120V, 60 Hz
- One-year parts and labor warranty

3735 \$109.00



96700 Electric Juicer

- The electric citrus juicer comes with 3 reamer sizes to fit lemons, oranges and grapefruits
- The unit also features a quiet motor, extra-tall spout to allow juicing into a variety of containers, a low center of gravity, and heavy-duty acid-resistant metal housing
- This juicer comes with an extra-large stainless steel bowl and has a sealed push button on/off switch
- Two-year parts and labor warranty
- 120V, 60 Hz, 3 amps
- UL and NSF Listed

2427 \$399.95



TRUSTED FOR GENERATIONS™

Camwear® Pitchers

- Exclusive ice-control contoured lip and pour spout designed to reduce spills
- Made of virtually unbreakable Camwear® polycarbonate
- Slotted base allows for complete and sanitary drying

Item No.	Capacity	H x Dia.	Price
2189	32 oz.	6-3/4" x 5-3/4"	\$5.99
2188	48 oz.	7-7/8" x 6-1/4"	\$7.39
2195	60 oz.	8" x 6-3/4"	\$7.79
13058	60 oz.	9" x 7-1/4"	\$8.95
4028	64 oz.	9-1/4" x 7-15/16"	\$8.99
716	64 oz.	9-3/4" x 7-5/16"	\$11.59
719	60 oz.		\$5.89
717	60 oz.	7-7/8" x 6-3/4"	\$5.89



P320CW

P480CW

PL60CW

P600CW



P60CW

P64CW

PC64CW

PE600CW

50 Utility Court
Rohnert Park, CA 94928

Tel: (707) 585-3566
Toll-free: (800) 238-0404
Fax: (707) 585-7306

Web: www.castinosolutions.com
Email: sales@castinosolutions.com

Monday - Saturday
8:00am - 5:00pm

Every effort has been made to verify the accuracy of all data contained in this publication, however, we cannot assume responsibility for errors or omissions. We reserve the right to substitute like items.



Induction Cooker

- 1800 Watts, 120 Volts
- Stainless steel with ceramic top
- Push-button operation
- 140°F to 464°F temperature range
- 15-1/2"L x 12"W x 4-1/4"D

1498 \$189.95



SuperSteel® Fry Pans

- Quality stainless steel fry pans
- Excalibur coated
- Induction ready
- NSF Listed

Item No.	Diameter	Price
1282	8"	\$17.49
1283	9-1/2"	\$23.89
1288	11"	\$29.75
1291	12"	\$41.59
1292	14"	\$51.99



SuperSteel® Fry Pans

- Quality stainless steel fry pans
- Natural finish
- Induction ready
- NSF Listed

Item No.	Diameter	Price
18535	8"	\$12.19
18536	9"	\$17.79
18537	11"	\$21.19
1026	12"	\$31.29
1025	14"	\$41.39



Meat Chopper / Grinder

- Die-cast aluminum grinding head
- Complete with pan, auger, (1) #12 knife, (3) plates (fine 1/8", medium 3/16", and course 5/16") and (3) food safe plastic stuffing tubes
- Powered by a 350 Watts, 1/2 HP motor
- Capacity to process 2-3 pounds of meat per minute
- 16" x 7" x 17"

3820 \$159.95



Grease Guard® Baffle Filters

- Galvanized steel
- Furnished with handles
- 2" nominal thickness, 1-3/4" actual thickness
- Height measurement is direction of baffles
- UL, ULC Certified

Item No.	H x W	Price
7411	16" x 20"	\$34.50
7415	20" x 16"	\$34.50
7410	20" x 20"	\$22.19
7412	20" x 25"	\$48.19